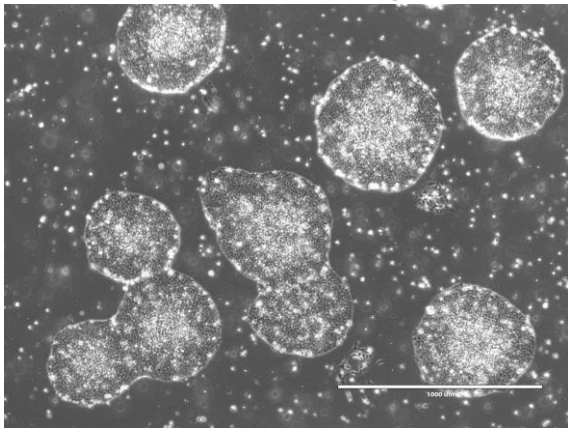
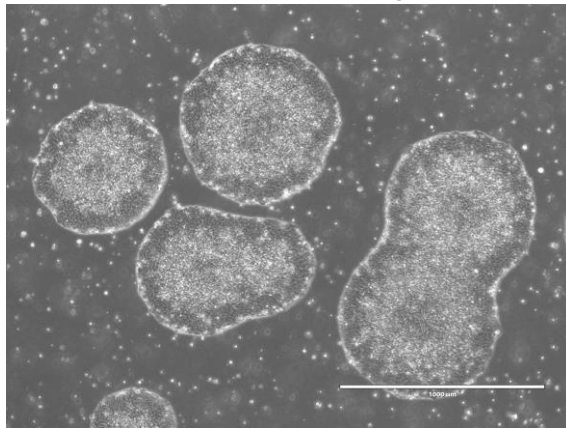


【 CiRA-j-1447 】 Morphology of iPSC colonies

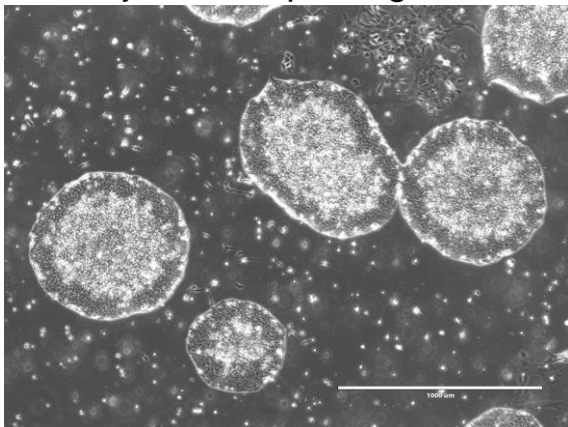
CiRA-j-1447-A: passage-3



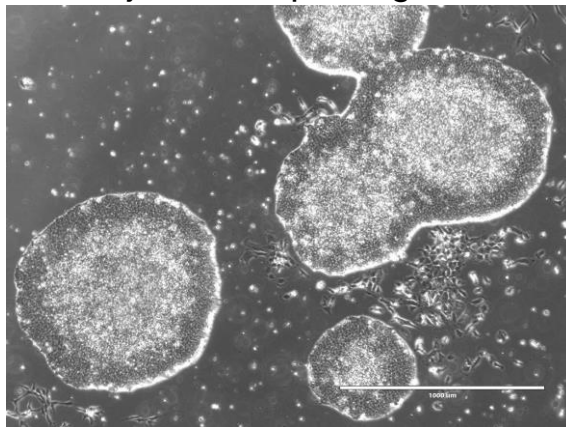
CiRA-j-1447-B: passage-3



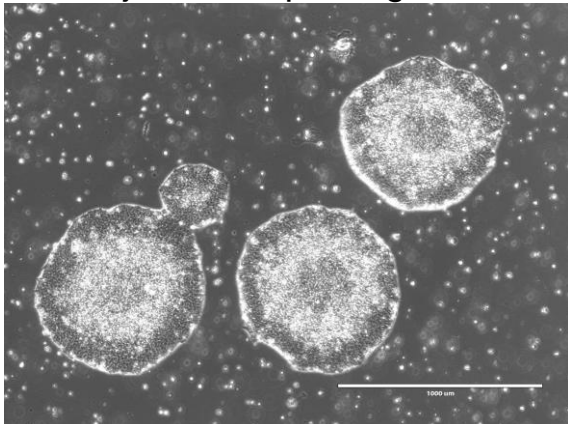
CiRA-j-1447-C: passage-3



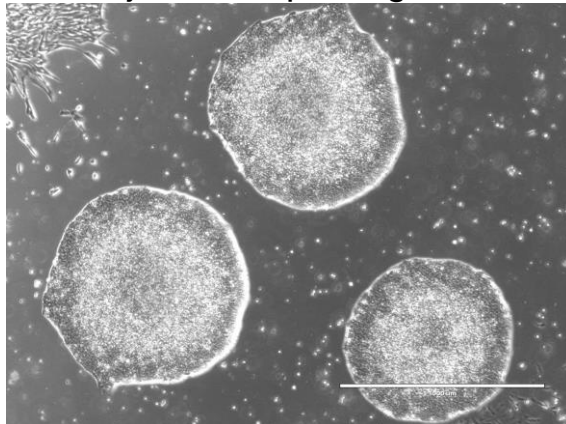
CiRA-j-1447-D: passage-3



CiRA-j-1447-E: passage-3



CiRA-j-1447-F: passage-3



(All images were captured at 4x magnification)